

# AlphaPAT

## AlphaPAT

### Downloading Portable Appliance Tester



#### Wide application range

- AlphaPAT is a handheld instrument intended for safety testing on electrical portable appliances, information technology equipment and IEC cords.

#### Easy operation

- Jogger keypad combined with user friendly graphic LCD simplifies adjusting and measuring procedure.

#### Auto Run sequence mode offers

- **Shortcut Menu** with over 120 types of pre-selected test procedures based on appliance type, class, length of supply cord, maximum current capacity, and other,
- **Custom Menu**, which enables user pre-programmed tests and test sequences.

#### Dual voltage test capability

#### High accuracy and safety

- The instrument meets or exceeds the demands of the latest safety and appliance testing standards
- High accuracy and the highest protection of the user and tested appliance during test is guaranteed in all working conditions.

#### Lightweight design

- Assembled in a durable, rugged housing, weighing under 3,5 kg in total, AlphaPAT will become a favourite among technicians performing measurements on-site.

#### PC Software PAT Link

- Perfect tool for documentation, analysis and printing out test reports.

#### Features:

#### Single tests or Auto Run sequence tests:

- Earth Bond Test
- Screen Bond Test
- Insulation Resistance
- Substitute Leakage Current
- Differential Leakage Test
- Touch Leakage Test
- Functional Test
- IEC Lead Test
- Clamp Current Test
- Polarity Test

*All measurements are True RMS*

- **Unique Shortcut Menu**
- Communication with PC, BAR Code Reader,
- RFID Reader / Writer, or Printer
- **1100 memory locations**
- **Downloads at 115,000 k baud rate**

**NEW!**

#### Measurements and testing in accordance with:

IEC 60335-1	Household and similar electrical appliances
IEC 60598-1	Luminaries
IEC 60745	Hand-held motor operated tools
IEC 60950	Safety of information technology equipment
VDE 701 T1	Repair and modification inspections
VDE 702 T1	Repeat tests of electrical appliances

Standard set

Order No. **MI 2142**



- Instrument AlphaPAT
- Earth Bond / Touch Leakage clip
- Carrying bag
- Mains cable
- Instruction manual
- Declaration of conformity
- Product verification data

## Key Features



- Over 120 pre-selected Autotest procedures
- Customised Autotests
- Single tests
- Storing, downloading and direct printing of test results.



- Simple access to pre-programmed Autotests



- Adjustable limits and user friendly graphic LCD accelerate the measuring procedure



Clear and easy access to test procedure:  
- select the auto test, press START



Mobile phone type  
- keypad for fast entering of appliance data and date

Connection for Earth leakage current clamp



Multi - input / output ports:  
- Bar Code reader  
- RDIF reader / printer  
- Printer  
- PC



Carrying bag for easier use in the field.

## Technical Specification

### Earth bond test

Test currents: 10 A, 25 A  
Measuring range: 0.00 ÷ 19.99 Ω Accuracy: ±(5 % of r. + 3 dig.)

### Earth screen test

Test current: 100 mA  
Measuring range: 0.00 ÷ 19.99 Ω Accuracy: ±(5 % of r. + 3 dig.)

### Insulation test

Test voltages: 250 V DC, 500 V DC  
Measuring range: 0.000 ÷ 0.500 MΩ Accuracy: ±(10 % of r. + 5 dig.)  
0.501 ÷ 19.99 MΩ Accuracy: ±(5 % of r. + 3 dig.)

### Substitute leakage test

Test voltage: 40 V AC  
Measuring range: 0.00 ÷ 19.99 mA Accuracy: ±(5 % of r. + 5 dig.)

### Differential leakage test

Measuring range: 0.00 ÷ 19.99 mA Accuracy: ±(5 % of r. + 5 dig.)

### Touch leakage test

Measuring range: 0.00 ÷ 1.99 mA Accuracy: ±(5 % of r. + 5 dig.)

### Functional test

Power measuring range: 0.00 ÷ 3.69 kVA Accuracy: ±(10 % of r. + 3 dig.)

### IEC lead test

Test voltage: <50 V AC  
Faults: Open, Short, Crossed, Multiple faults

### Clamp current (True RMS)

Current range: 0.00 mA ÷ 24.9 A Accuracy: ±(5 % of r. + 5 dig.)

### L-N pretest

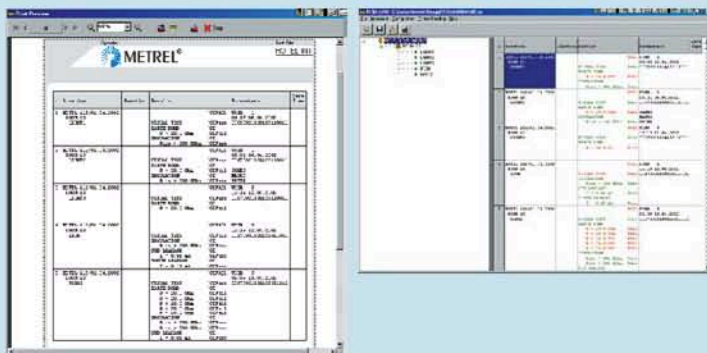
Tests between L and N. Pass level is 30 kΩ ±6 kΩ.

## Professional PC SW package, printout facilities

The accompanying professional PC SW package PATLink enables:

- viewing and analysing of measurement results,
- storing of results for documentation,
- operating of test reports,
- printing of test reports.

Also available PC SW package Simply PATs which supports most common PAT testers.



## Latest technology for appliance identification

### RFID technology

- stores test appliance type procedure, test date, test results, comments in small RFID tags,
- simple RFID reader / writer

### Bar Code technology

- stores test procedure,
- printing of Bar code labels (in combination with PC)



## General Specification

Mains voltage	230 V AC (+10 %, -10 %), 50 / 60 Hz
Display	Graphic 128 x 64 dots matrix display, backlight
RS232 interface	Baud rate max. 115200 bps
Memory	1100 memory locations
Pollution degree	2
Degree of protection	IP 41
Overvoltage category	CAT II / 300 V
Protection classification	double insulation
Dimensions (w x h x d)	265 x 110 x 185 mm
Mass (without accessories)	3,5 kg
Working temperature range	0 ÷ +40 °C

## Optional accessories

## Order No.:



- 110 V test adapter **A 1136**
- Printer **A 1103**
- Bar Code reader **A 1105**
- Bar Code Labels, 200 pcs **A 1106**
- RFID reader / writer **A 1107**
- RFID tags, 50 pcs **A 1108**
- PC SWPAT link with RS 232 cable **A 1117**
- Current Clamp (other on request) **A 1018**
- PC SW Simply PATs **A 1118**